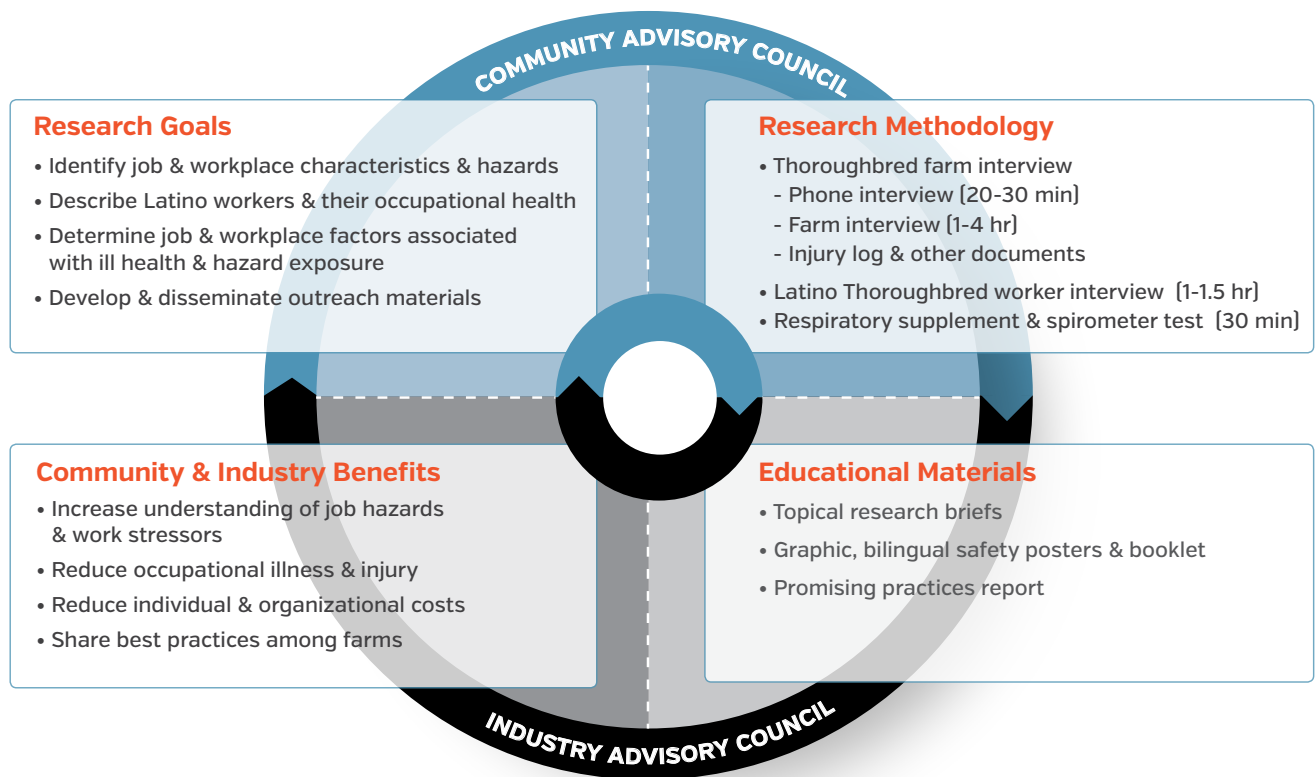


What is the Thoroughbred Worker Health & Safety Study?

This is the first in a series of research briefs reporting the findings from the Thoroughbred Worker Health and Safety Study. **The Thoroughbred Worker Health & Safety Study strives to improve the health of workers on Thoroughbred farms.** Led by researchers at the University of Kentucky and University of Maryland in collaboration with key stakeholders from the Thoroughbred industry and Latino community, this project collected information about organizational policies, worker benefits, safety practices, and worker health on Thoroughbred farms.

This study will result in strategies to preserve the wellness of workers and productivity of the workplace; decrease injury, illness and absenteeism; and lower health-related costs.

Core Project Elements



Project Phases

Phase I: Employer Interviews

A telephone-administered survey and in-depth interviews were conducted with 41 representatives from 32 Thoroughbred farms.

Interviews covered:

- farm characteristics
- farm policies and practices, particularly those related to health and safety
- perspectives about job hazards, and recent injuries and illnesses
- 22 farms provided de-identified information about recent injuries

Year 1:

Prepare and build advisory councils

Year 2:

Interview farm representatives

Phase II: Thoroughbred Worker Survey

A face-to-face survey was conducted with 225 Latino Thoroughbred farmworkers recruited from the community.

Surveys covered:

- farm policies and practices
- hazard exposure
- occupational health outcomes

Year 3:

Interview Thoroughbred farmworkers

Year 4:

Analyze data

Phase III: Development & Dissemination of Educational Materials

Based on study findings, we are developing educational materials for workers and their managers in order to reduce exposure to job hazards and decrease incidence of occupational illness, injury and near misses.

Year 5:

Develop and distribute materials

Advisory Councils

The Thoroughbred Worker Health and Safety Study has two advisory councils, which help to guide the research process and ensure that it meets the interests of the Thoroughbred industry and its workers.

Industry Advisory Council members represent:

- Area Thoroughbred farms
- Blue Grass Farms Charities
- Bluegrass Community Health Center
- Commerce Lexington
- Kentucky Thoroughbred Association
- Kentucky Thoroughbred Farm Managers' Club
- Kentucky Thoroughbred Owners and Breeders
- Lexington-Fayette Urban County Government

Community Advisory Council members represent:

- Bluegrass Community Health Center
- Goodwill Industries
- KCHIP- Program de Seguro Médico para los Niños de Kentucky
- Kentucky Migrant Farmworkers with Disabilities Employment Partnership
- Lexington Fayette Urban County Government
- Maxwell Legal Clinic
- North Central Area Health Education Center
- Radio Vida 1440am

We thank the participating farms and workers that made this research possible.

This work is supported by the Southeast Center for Agricultural Health and Injury Prevention, University of Kentucky College of Public Health, under CDC/NIOSH Cooperative Agreement 5U54OH007547-14. Its contents are solely the responsibility of the authors and do not necessarily represent the official views of CDC/NIOSH.

For more information, please contact Dr. Jennifer Swanberg at jswanberg@ssw.umaryland.edu, Jess Miller Clouser at jess.clouser@uky.edu, or visit www.workersafetyandhealth.com.